

TOWN OF ARIETTA
PO Box 37
Piseco, NY 12139
Ph. (518) 548-3415 FAX (518) 548-6203
Highway Department Ph. 548-7302

RECYCLING, TRASH and GARBAGE PICKUP for 2015

GARBAGE DAYS: Garbage pickup is every Monday year round
(Tuesday if Monday is on a Holiday)

SUMMER SCEDUALE: July 1st. & ending August 28th pick up will be Monday & Thursday

RECYCLABLES: Only Monday year round (Tuesday if Monday is on a
Holiday) Please **separate** Glass, Plastic, Metal and Paper. (see back of page)
Use rain tight containers. Please no more bags at roadside.
Cardboard to be broken down flat, DO NOT put out if rain is in the forecast.

LARGE TRASH: Large and Heavy Trash Pickup will be on the June 4th, and August 6th

NO Hazardous Materials.
Some recyclables and trash that is not picked up can be taken to the Transfer
Station: (see back of page)
We will **NOT** be accepting refrigerator's or air conditioning units until
further notice.

BRUSH: Only 1st Saturday of every month, starting May 30th--October 3rd 2015
Residential brush 3" or less in diameter, to be neatly piled by transporter,
NO contractors or dump trucks.
Location: Route 10 at the Town sand pile. Time: Saturday 8-12

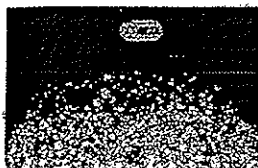
**LEAVES and
PINE NEEDELS:** Location: Old Piseco Road
Friday and Saturdays- June 1st -- October 31st

PLEASE PUT MATERIAL TO BE PICKED UP OUT EARLY IN THE MORNING

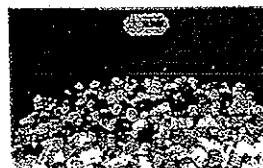
For further questions on trash please call 548-DUMP (548-3867)

Town of Arietta, Richard Wilt, Supervisor

518-548-3415



**LET'S RECYCLE TOGETHER
IN HAMILTON COUNTY**



HERE'S HOW WE MAKE IT WORK

**ALL RECYCLABLES ARE TO BE SEPARATED FROM HOUSEHOLD WASTE WHEN THEY ENTER THE
TRANSFER STATIONS**



CARDBOARD

All cardboard that is corrugated, clean and broken down.

DO NOT INCLUDE:

Soiled cardboard such as pizza boxes, non-corrugated cardboard



TIN CANS

All metal or aluminum. They must be empty and rinsed out.

DO NOT INCLUDE:

Aerosol cans or motor oil cans or paper oil cans with metal tops



GLASS

All colored and clear glass bottles and jars. They must be empty and rinsed out.

DO NOT INCLUDE:

Windows or vehicle glass



BULK METAL

All metal that isn't under tin cans classification.



PLASTICS

#1 (PETE) clear containers

#2 (HDPE) colored containers

#2 OPAQUE—milk jugs, ect.

DO NOT INCLUDE:

Container tops, Styrofoam containers, motor oil bottles, clothes hangers, plastic bags, toys



PAPER

Office/mixed paper, books, phone books, newspaper, magazines, catalogs, bulk mail, non-corrugated cardboard like beer & soda cartons.

DO NOT INCLUDE:

Paper with any metal or plastic attached, corrugated cardboard, soiled paper.



TIRES

All rubber tires, rubber tracks.

DO NOT INCLUDE:

Tires still attached to rims. All rims must be removed and put in the metal container.



ELECTRONICS

TVs, computer peripherals including cables, cords, monitors, towers, keyboards & mice. Small electronic equipment such as VCR's, portable music players, DVD players, cable or satellite receivers & video game consoles.

DO NOT INCLUDE:

Mercury thermometers, coffee makers, light bulbs.



LIGHTS

Fluorescent light bulbs (intact), Christmas tree lights.

DO NOT INCLUDE:

Incandescent light bulbs, broken fluorescent light



USED OIL

If adequate space is available.

DO NOT INCLUDE:

Antifreeze, gasoline, fuel oil, Parts cleaner, etc.

>Starting January 1, 2014 household garbage must be put in CLEAR plastic bags. Household garbage in non-clear bags or containers will not be allowed in the transfer stations.

>Although not necessary, it is recommended that all bottles and cans that have a New York State deposit be separated out of other recyclables.

>Recyclable materials are to be separated from other waste before being placed out for pickup or being brought into the transfer stations.